



Case Study

Mobile Modular Delivers the United States Army a robust yet cost effective modular medical facility.



PROJECT PROFILE

Project Partners: Syska Hennessy,
Larry Pittman & Associates,
Augusta, CA

Building Use: Medical Facilities
Square Footage: 9,000

CHALLENGE

Augusta, GA – The United States Army is currently renovating the Eisenhower Army Medical Center at Fort Gordon in Augusta, Georgia. Not long after the Task Order was awarded to construction firms Syska Hennessy and Larry Pittman & Associates, revisions of the center's 12th floor spurred the need to expedite the scheduled completion of select finished medical facilities. Mobile Modular was contracted by Pittman to provide modular office space for center staff.

"Mobile Modular was able to deliver the product on-time and under budget. From the operations manager to the sales specialist they have been a pleasure to work with. Their response time to every problem has been outstanding."

Timmy Pittman - CEO of Larry Pittman & Associates

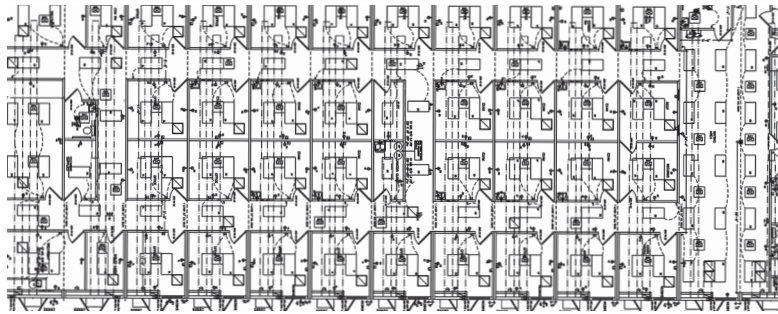
The U.S. Army requested that their new Mobile Modular building be usable as fully functional medical facilities, as well as efficient general office building space. Their specification included twenty (20) offices and a fully equipped gym.

The 12th floor of Fort Gordon's Eisenhower Army Medical Center is home to the hospital's brain trauma group, tasked with the treatment and rehabilitation of soldiers returning with

brain injuries from service in Afghanistan and Iraq. The space housed approximately twenty (20) doctors and therapists, twenty (20) nurses and ten (10) administrative personnel. The staff needed to be temporarily moved to a suitable modular workspace while the center's 12th floor was renovated.

SOLUTION

Mobile Modular's Mid-Atlantic team worked closely with Larry Pittman & Associates to create a building covering 9,000 square feet to be used as medical facilities and office space during the renovation.



The new space housed approximately twenty (20) doctors and therapists, twenty (20) nurses and ten (10) administrative staff.

Early incorporation of this flexible, modular building design enabled Mobile Modular to save a tremendous amount of resources for the U.S. Army during a demanding renovation project. By being available and responsive to the customer at all times, Mobile Modular's team was able to complete the new energy efficient building while exceeding the expectations of even the U.S. Army.

Timmy Pittman, CEO of Larry Pittman & Associates, states "Mobile Modular was able to provide a top notch product for the men and woman who serve their country, and was able to do it on time and under budget. From the operations manager to the sale specialists, they have been a pleasure to work with. Their response time to every issue has been outstanding."



Your Project – Our Commitment

Mobile Modular delivers the most adaptable modular building systems that keep today's most challenging commercial projects on time and on budget.

For more information visit: mobilemodular.com

