

# Modular Job Site Buildings

## Construction Buildings for Temporary Needs

Mobile Modular offers flexible, high-quality job site buildings for temporary office and restroom needs. All buildings are pre-prepped and delivered directly to your job site ready for installation and occupancy.

Available for Rent, Lease or Purchase

Mobile Modular provides the modular job site space that today's construction crews depend on. With a broad selection of commercial-grade buildings, bearing the California Housing and Community Development (HCD) insignia, you can choose from several sizes and configurations. If your modular office requires a unique floorplan, we're ready to design a custom plan to suit your needs.



“The construction offices from Mobile Modular are the best we have ever had.”

**John Smith**  
Barnhill Contracting

### Exterior Features

- Durable wood siding with masonite trim
- 26 gauge metal roof
- Vinyl clad metal exterior doors
- 46" x 39" windows with sliders
- 3' tow bar

### Interior Features

- Paneled interior walls
- 4" vinyl cove base and vinyl tile floor
- 2'x 4' T-grid suspended ceilings
- 8' ceiling height
- Deadbolt locks

5700 Las Positas Road  
Livermore, CA 94551 | P 925.606.9000

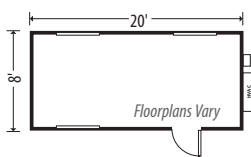
11450 Mission Blvd.  
Mira Loma, CA 91752 | P 951.360.6600



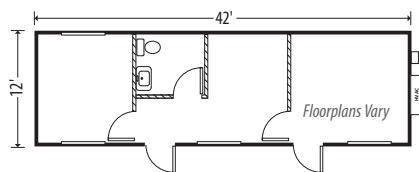
800.944.3442  
www.mobilemodularrents.com

### Job Site Buildings

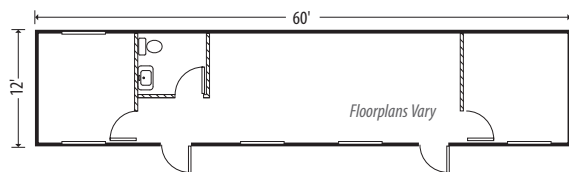
8' x 20' Building\*



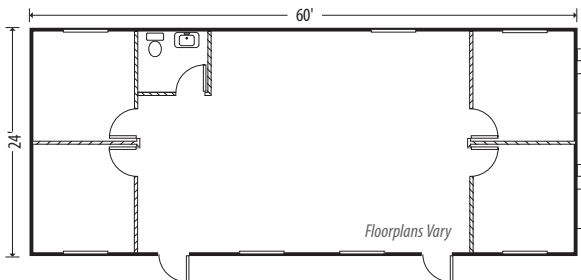
12' x 42' Building w/ Restroom\*



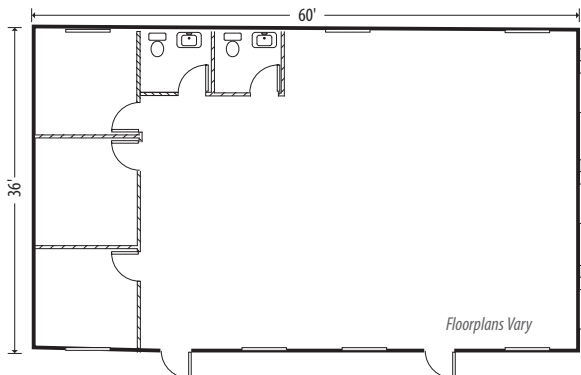
12' x 60' Building w/ Restroom\*

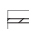


24' x 60' Building w/ Restroom\*



36' x 60' Building w/ Restrooms\*



 Represent sample standard floorplans. Choose from standard plans or customize your floorplan.

#### Electrical Features

- Recessed, fluorescent lighting
- 100 Amp, 220V single phase panel box
- Exterior lighting with independent switch
- Duplex receptacles along interior walls

#### Heating & Air Conditioning

- Exterior mounted HVAC system
- Ceiling, exterior wall and subfloor insulation
- Programmable electronic thermostat

#### Options

- Custom, flexible floorplans
- Seismic and wind restraint systems
- Security bars and screens
- Stair rentals
- Restrooms and showers
- Gutters and downspouts
- Custom paint
- Skirting
- Custom carpet or flooring
- Custom cabinetry/furniture
- ADA handicap-accessible ramp
- Low voltage data/voice drops
- Mini-blinds

\*All dimensions are nominal. Unless noted, equipment and related furnishing, finishes, accessories and appliances provided are previously leased. Materials, dimensions and specifications vary.

Fixture count, floorplans and available sizes may vary by region. Please contact your modular building expert for further information. Specifications are subject to change without notice.

### Did you know?

**Mobile Modular project staff can provide expert guidance on site preparation and permitting.** Our installation crews have broad experience around site security, safety and a range of site conditions.



5700 Las Positas Road  
Livermore, CA 94551 | P 925.606.9000

11450 Mission Blvd.  
Mira Loma, CA 91752 | P 951.360.6600

800.944.3442  
www.mobilemodularrents.com

Rent, Lease or Purchase