

# Campus Maker Eco™ Modular Classroom

A modular classroom with a smaller carbon footprint

The Campus Maker Eco represents the necessities of the 21st century classroom. It is designed to provide students and teachers a superior learning environment, while also delivering energy and land efficiencies.

Save Land, Money and Energy



Mobile Modular's Campus Maker Eco is the only readily available classroom for lease that meets all 2012 energy efficiencies and structural requirements of the Florida Building Code (FBC), including 2014 supplements. The Eco's highly efficient HVAC system, combined with its insulation values, EPDM roof and low-e insulated windows, all work in concert to **reduce energy consumption by as much as 38%**.



## Product Features

### Building Set Capabilities

- Classroom buildings can be set at a 14" threshold from the ground, eliminating the need for ramps and/or stairs
- One hour fire rated long walls allow classrooms to be set next to one another, creating a "school wing look"

### Interior Features

- Highly energy efficient HVAC with programmable thermostat
- Ducted air supply distributes air quietly, efficiently and evenly to help create a superior learning environment
- A rigid floor system consisting of perimeter steel chassis with steel purlins and R-24 insulation further enhances the quiet and comfortable learning environment
- Floor finished with high quality carpet
- Drop ceiling with 2'x2' acoustic tiles

### Exterior Features

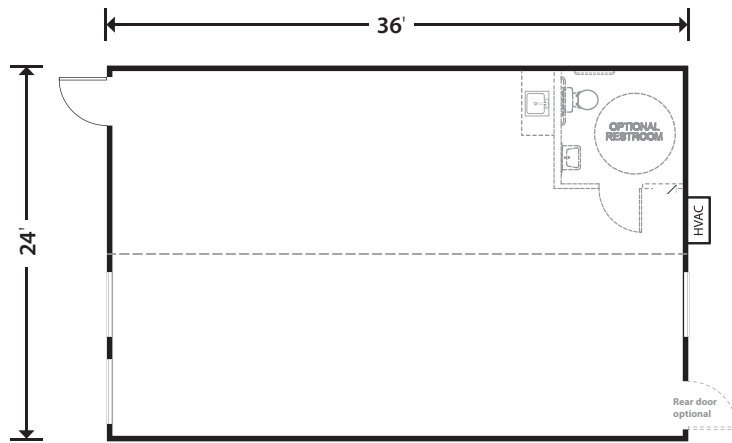
- Walls are steel stud with construction Structural Insulated Panels (SIP) covered with an attractive stucco finish. A rigid R-26 insulation and Vinyl Coated Gypsum makes for an energy efficient assembly
- Energy efficient roof system includes R-24 insulation with a white EPDM rubber roof
- Mono-pitch roof design with a 2" rear overhang diverts rainwater from draining onto exterior openings
- 186 MPH wind resistance meets all wind zones in Florida, including Miami Dade. The High Velocity Hurricane Zone (HVHZ) rating and large missile impact resistance meets the FBC 2410.2.2

Lease or Purchase



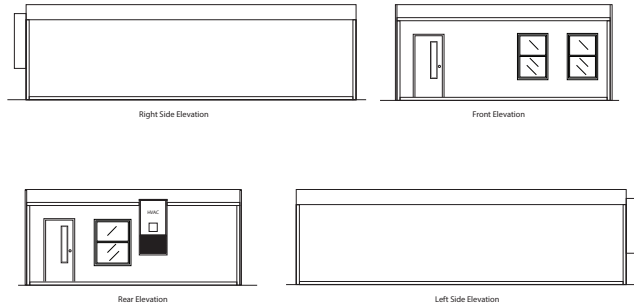
1100 State Hwy 559  
Auburndale, FL 33823-9356 | 800.944.3442

800.944.3442  
mobilemodular.com



**LEGEND**

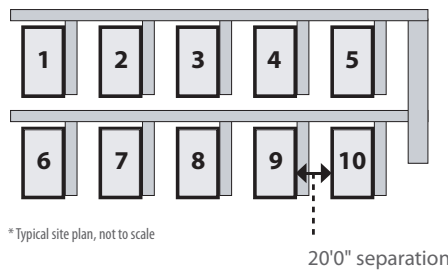
- Window
- Door
- Heating, Ventilation, and Air Conditioning
- Electrical Sub Panel



\*All dimensions nominal. Unless noted, equipment and related furnishings, finishes, accessories and appliances provided are previously leased. Materials, dimensions and specifications vary.

**Traditional Classroom Layout**

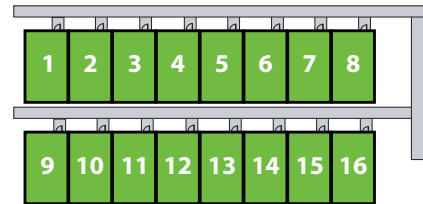
Traditional portable classrooms require a minimum of 20' separation between classrooms.



\* Typical site plan, not to scale

**Campus Maker Eco Layout**

The Campus Maker Eco modular classrooms installed side-by-side



\* Typical site plan, not to scale

**Notes**

---



---



---

The availability of a product and its features may vary. Please contact your modular building expert for further information. Specifications are subject to change without notice.

1100 State Hwy 559  
Auburndale, FL 33823-9356 | 800.944.3442

© 2016 McGrath RentCorp. All rights reserved. Printed on recycled paper.



800.944.3442  
mobilemodular.com

MM-2053FL-TS-v1.0 4/16

Lease or Purchase