



MOBILE MODULAR CASE STUDY

Mobile Modular delivered a modular alternative that met Roddy Ranch Golf Club’s space needs while offering the attractive amenities that appealed to its members.



PROJECT PROFILE

Roddy Ranch Golf Club,
Brentwood, CA

Project Partners: None

Days to Complete: 4

Building Use: Administrative Offices, Restaurant,
Lounge, and Pro Shop

Square Footage: 2,880



MOBILE MODULAR

Our mission is to provide each customer with a building designed to meet their specific needs and a level of individual service that laps our closest competitor. We believe we are the most knowledgeable, resourceful and capable company in the industry today.

For more information visit:
www.mobilemodularrents.com

Challenge

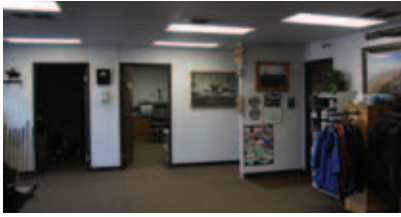
Brentwood, CA – Located in the foothills of a working 2,000-acre cattle ranch, Roddy Ranch Golf Club offers 235 acres of golfing excellence in the hills east of Mount Diablo in California’s Bay Area. Established in 2000, Roddy Ranch today attracts avid golfers from across the United States with its mix of beautiful scenery, challenging play and full-featured member amenities.

When Roddy Ranch experienced financial trouble during the sharp economic downturn of 2008, among the first major expansion projects to be postponed was a long-planned permanent clubhouse. Intended to be an upscale center for club members and visitors, construction plans included a new restaurant and lounge area with scenic overlooks of the club’s picturesque lakes and greens. In 2009, Roddy Ranch representatives saw the work Mobile Modular had just completed at nearby Stonebrae Country Club – a large modular clubhouse sporting cherry wood finishes and luxurious touches – and felt it would appeal to their own members. Contracting the same Mobile Modular team to review its needs and outline a design of its own, Roddy Ranch set out to establish a clubhouse based on modular construction and relocatable workspace design.

Solution

To complete the clubhouse project on Roddy Ranch’s budget and timeline, the Mobile Modular team set out a plan for a 2,880 sq ft, 48’ x 60’ structure composed of our modular office buildings. The end product was an attractive building that served Roddy Ranch’s needs while keeping the project outlay comfortably within its budget.



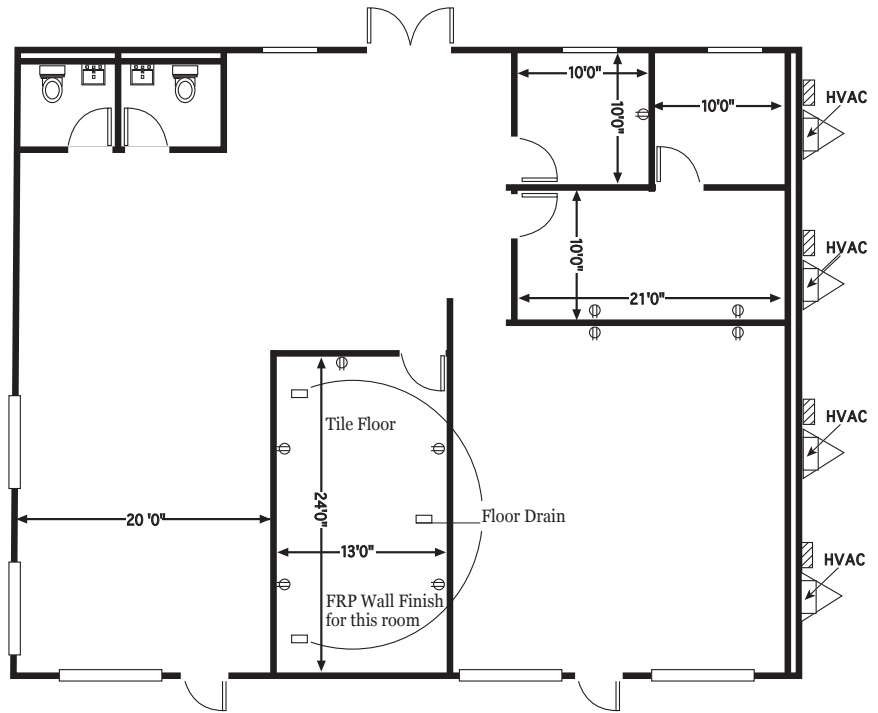


YOUR PROJECT – OUR COMMITMENT

Mobile Modular delivers the most adaptable modular buildings systems that keep today's most challenging educational projects on time and on budget.

For more information visit:
www.mobilemodularrents.com

Today, the modular Roddy Ranch clubhouse provides many of the features included in the original permanent construction plans, including a golf and gift shop, a sports lounge featuring two 50-inch HD televisions, a restaurant and a back deck that is used regularly for tournaments, parties and other special events.



The project design called for over 2,880 sq ft consisting of modular administrative offices, lounge, pro shop and restaurant for Roddy Ranch Country Club.